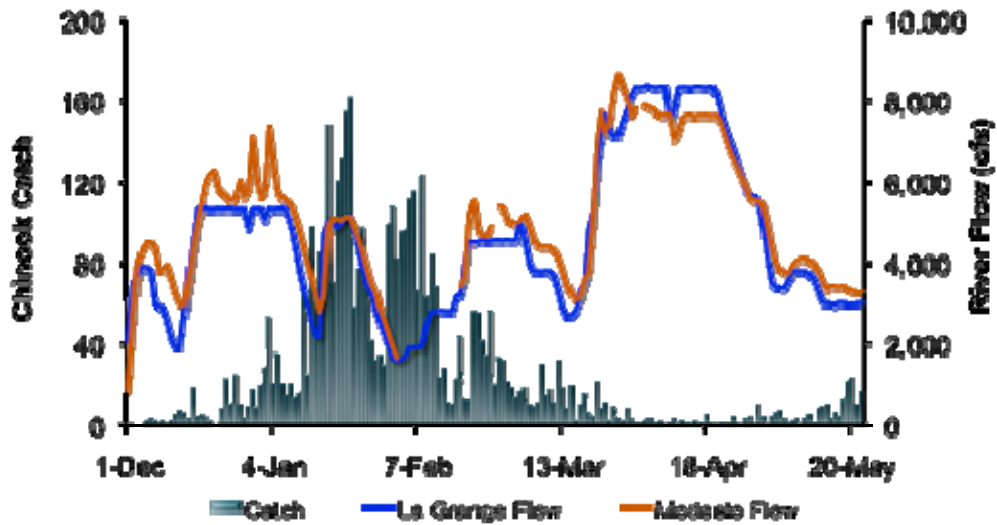
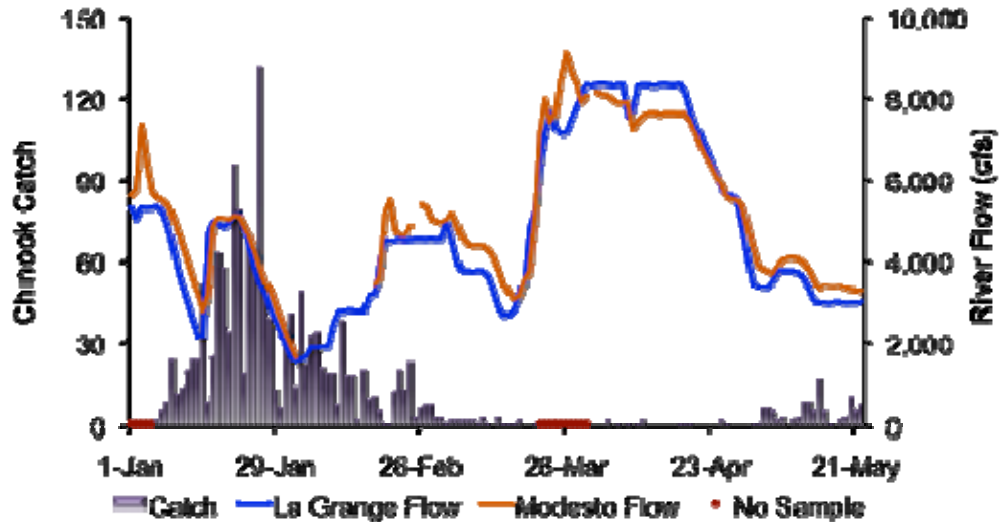


Lower Tuolumne River RST data for 2011



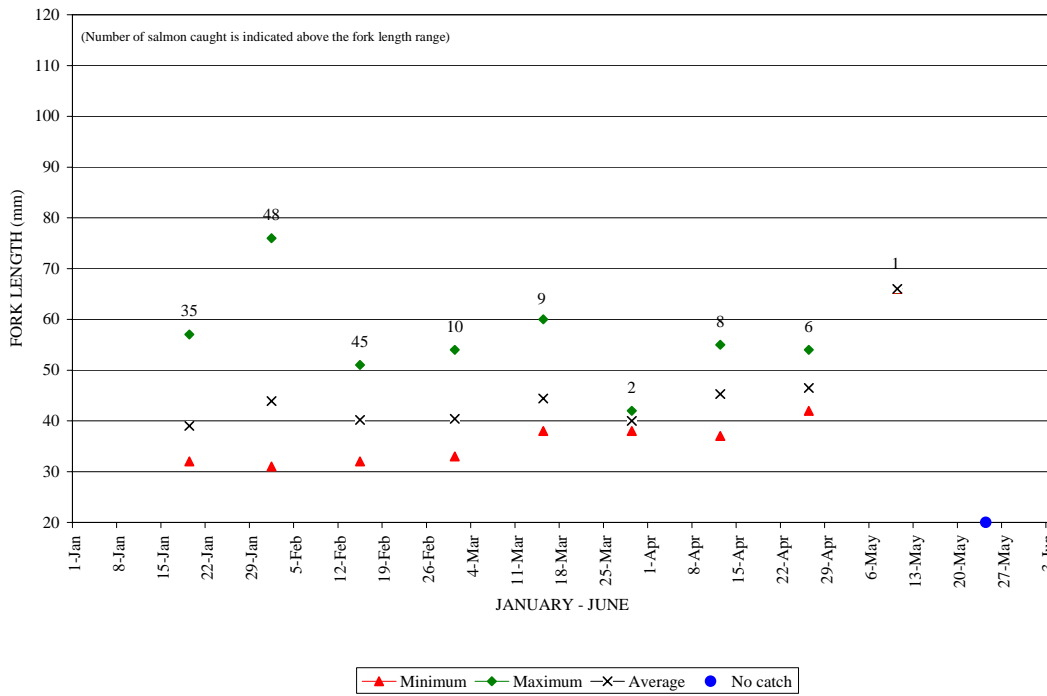
Daily Chinook salmon catch at Waterford, and Tuolumne River flow recorded at La Grange (LGN) and Modesto (MOD) between December 1, 2010, and May 22, 2011. Season total = 4,223 captures.



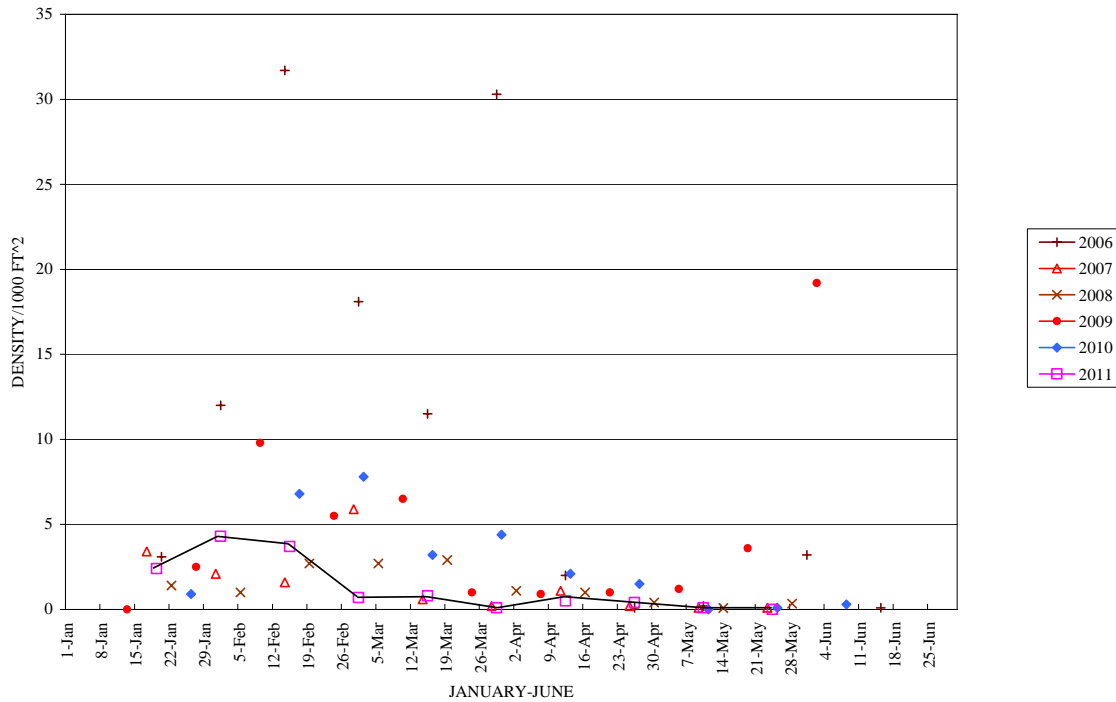
Daily Chinook salmon catch at Grayson, and Tuolumne River flow recorded at La Grange (LGN) and Modesto (MOD) between January 1 and May 22, 2011. Season total = 1,574 captures.

Lower Tuolumne River seine data for 2011

2011 TUOLUMNE RIVER JUVENILE SALMON SEINING STUDY

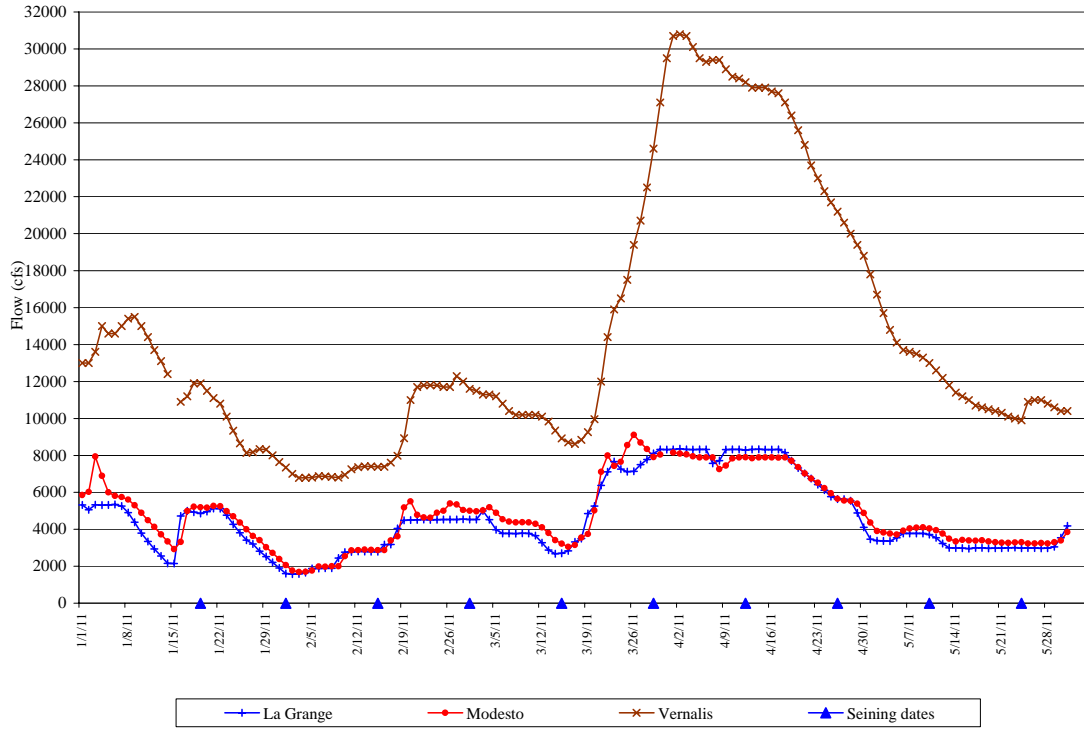


2006-2011 TUOLUMNE RIVER SEINING
COMBINED FRY AND JUVENILE SALMON DENSITY INDEX



Tuolumne and San Joaquin River flow and delta export to date, WY 2011

2011 Tuolumne and San Joaquin River daily mean flow
Provisional USGS data



Daily average flow at Vernalis (SJR) and combined CVP and SWP delta export
Water Year 2011

